



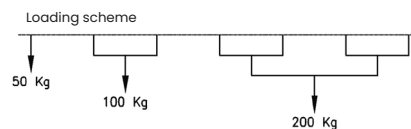
SLO 50



Manutechnik has more than 35 years of experience in the maintenance sector, and enjoys great prestige worldwide, as well as numerous installations distributed throughout the world.

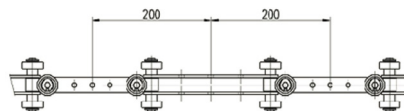
SLO 50 overhead conveyors

The SLO 50 series of overhead conveyors is designed for those installations that require efficient and continuous transport of parts. The maximum load depends on the connection to the chain, following the following scheme:

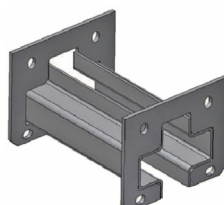


It allows the conveyor to be adapted to the required layout, and to overcome inclinations of up to 45°.

Numerous highly prestigious companies already have these conveyors in their facilities, benefiting from their high reliability and safety.



The MTI 50 chain is driven by the motor group, to which the hooks are incorporated. The mechanism runs along the installed profile at the required speed.



Installation of SLO 50 conveyor.

TECHNICAL CHARACTERISTICS

Chain pitch: 200 mm

Working temperature:

-30 °C to 230 °C

Maximum load: 50/100/200 Kg according to loading scheme

Horizontal curves:

Degrees: 90°/60°/45°/30°/15°

Radius: 1.000/750/500 mm

Vertical curves:

Degrees: 45°/30°/15°

Radius: 1.000/750/500 mm

Motor unit:

Straight group: 50 - Wheel group

Tensioner group: Manual or pneumatic

Lubricator:

Automatic



Pol. Ind. Rubí sud
Av. Gaudí, 295, 08191 RUBÍ
(BARCELONA)

Telephone: +34 936 975 250

E-mail:

manutechnik@manutechnik.com

Web: www.manutechnik.com